

# soap and paper

## soap and paper dispensers

**Brightwell's washroom dispensers combine cutting-edge design, ultra-durability and style.**

### **Washroom Solutions**

Brightwell's attractive, hygienic washroom dispensers are utilised in offices, motorway services, commercial kitchens, nursing homes, light-industrial workplaces and hospitals all over the world.

**Soap Dispensers** – From state-of-the-art 'touch-free' soap dispensers, to durable classics and 'mini' products popular in hotels, we stock a range for any environment.

**Paper Dispensers** – A complete range of dispensers for paper and wet wipes ensures the products are clean and easy-to-use.

### **Promote Your Brand**

Product distributors are proud to promote their logo on our high-performance dispensers. Contact us to ask how we can print your logo on our products.

### **washroom ranges**

3-23

A good-looking range of soap, paper and air-freshener dispensers for clean and easy use of washroom products.

### **commercial soap dispensers**

24-26

Stylish, durable soap dispensers guaranteed to enhance the hygienic appeal of any commercial kitchen or washroom.

### **industrial soap dispensers**

27

Industrial-sized dispensers require less refilling and are ultra-durable. These extra-capacity units come with a unique, heavy-duty pump for a lifetime of use.

## washroom ranges

# Modular washroom range


**Modular centre pull dispenser, large**

**Modular centre pull dispenser, small**

**Modular hand towel dispenser, large**

**Modular hand towel dispenser, small**

**Modular hand dryer**

**Modular industrial soap dispenser**

**Modular soap dispenser**

**Modular mini soap dispenser**

**Modular air freshener**

**Modular wet wipe dispenser**

**Modular jumbo toilet tissue dispenser, large**

**Modular jumbo toilet tissue dispenser, medium**

**Modular jumbo toilet tissue dispenser, small**

**Modular multiflat toilet tissue dispenser**


The stylish Modular range from Brightwell includes a range of accessorised soap and paper dispensers, a hand dryer, air fresh system and an exciting new wet wipe dispenser. So, whatever mix you need for your washroom, kitchen or commercial environment, you can now offer products in a matching style.

The distinctive window design feature of the range is available in a variety of colours. There is a large printable area for your company logo or simple instructions, if required. All the units lock automatically when closed and can be opened with a universal key.

**washroom ranges**

# Modular soap



This unique dispenser offers a host of customer advantages. Using a universal enclosure, the dispenser can be fitted with a variety of interchangeable pumps allowing the delivery of liquid, spray or foam soap.

The preferred soap can be dispensed using a variety of "plug and play" components including a refillable reservoir, disposable bottle and disposable pouch.

The cover will lock automatically when it is closed and can be selected to open with the use of either a push button or the supplied key. The cover also acts as the pusher, eliminating the need for an arm lever.

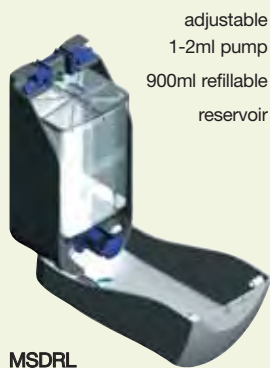
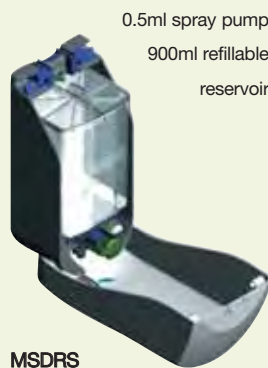
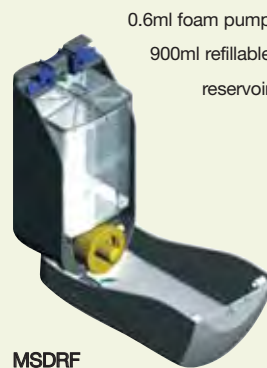
The interchangeable pump has the ability to be locked into place to prevent tampering and the dispenser is provided with a two-year guarantee against defects in materials and workmanship.


**refillable reservoir**

**disposable pouch and pump**

The Modular soap's translucent window and large graphics area, for your logo, offer you the ability to customise the dispenser with your washroom, kitchen, commercial environment or modular suite.

You can choose to purchase the modular soap dispenser from Brightwell as a finished product. Alternatively, each module (pump, cartridge, enclosure) is available individually offering you the ability to maintain your own stock and assemble dispensers to order.

**refillable reservoir with permanent pump**

**MSDRL**

**MSDRS**

**MSDRF**

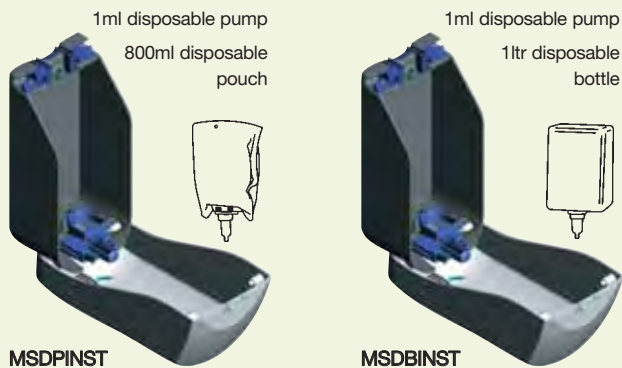
**MSDRE**

washroom ranges



An institutional version is also available offering a completely disposable pump and cartridge or pouch that is ideally suited for situations where total disposability is preferred.

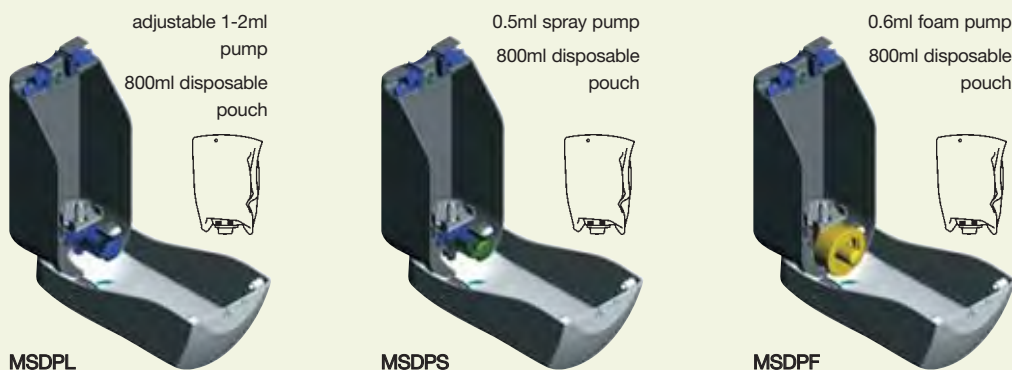
disposable institutional cartridge with disposable pump\*



\* Exclusivity can be introduced when using the disposable pouch option to inhibit the use of competitor products (details on request).

<b>suitability</b>	soap and institutional (disposable) pump - flowable liquid soaps, gels and creams foam and spray - liquids with a viscosity of between 1 - 20cps
<b>capacity</b>	refillable reservoir - 900ml, disposable pouch - 800ml, disposable bottle - 1000ml
<b>pump</b>	soap/spray/foam - acetal pump with viton seals institutional - vitaprene dispensing tube with polypropylene valve components soap - 2ml shot size (1ml available on request) spray - 0.5ml shot size (0.25ml available on request) foam - 20ml foam shot (0.6ml liquid) institutional - 1ml shot size (maximum, dependant on product viscosity)
<b>materials</b>	ABS cover and window, glass filled polypropylene backplate polypropylene refillable reservoir/lid institutional - disposable LDPE bottle or LDPE/PET pouch and integral pump
<b>colour</b>	cover - white (chrome and other solid or translucent colours available on request) backplate - white or grey window - translucent blue, red, green, yellow, orange and grey
<b>options</b>	lock button, permanently fixed pump institutional - exclusive pouch to dispenser
<b>standard pack</b>	one dispenser per carton, including - fixing screws, wall plugs, adhesive pad, key and instructions keyless push button,
<b>dimensions (mm)</b>	H250 x W115 x D115 logo (max) - H75 x W75
<b>weight (approx.)</b>	fixed pump refillable/institutional - 0.6kg fixed pump pouch - 0.5kg
<b>order reference</b>	refillable liquid, spray, foam, touch-free - MSDRL MSDRS MSDRF MSDRE pouch liquid, spray, foam - MSDPL MSDPS MSDPF bottle institutional dispenser - MSDBINST pouch institutional dispenser with or without exclusivity - MSDPINST

disposable pouch with permanent pump\*



washroom ranges

# Modular soap 'touch-free'



The Modular soap dispenser is also available in a 'touch-free' refillable version. It has the ability to select shot sizes from 1, 2 or 3ml helping you control costs. Its smart hands-free activation makes it ideal for medical and food preparation facilities, as well as industrial and commercial environments.

The Modular soap's translucent window and large graphics area, for your logo, offer you the ability to customise the dispenser with your washroom, kitchen, commercial environment or modular suite.



<b>suitability</b>	flowable liquid soaps, gels and creams
<b>capacity</b>	650ml
<b>pump</b>	acetal housing with viton seals and polypropylene pump 1ml single shot size
<b>battery</b>	space for two sets of 4 x AA batteries (unit operates on one set of batteries and automatically switches to second set when run down) typical battery life - 100 refills (on two battery packs)
<b>materials</b>	ABS cover and window, glass filled polypropylene backplate polypropylene refillable reservoir/lid
<b>colour</b>	cover - white (chrome and other solid or translucent colours on request) backplate - white or grey window - translucent blue, red, green, yellow, orange and grey
<b>options</b>	selection of 1, 2 or 3 shots, lock button
<b>standard pack</b>	one dispenser per carton, including - fixing screws, wall plugs, adhesive pad, key and instructions keyless push button
<b>dimensions (mm)</b>	H250 x W115 x D115 logo (max) - H75 x W75
<b>weight (approx.)</b>	0.6kg
<b>order reference</b>	refillable liquid electronic - MSDRE

The dispenser is powered by 4 x AA batteries and has compartments for two sets. It will cleverly switch to the second battery pack when the initial set runs low and will last for up to 100 refills on two packs.

LEDs assist with programming and indicate the need for a replacement battery pack, so the dispenser need never run out of power.

## washroom ranges

# Mini Modular soap



Brightwell now offers a mini version of the market leading Modular soap dispenser that is just 190mm in height. Utilising the same pumps as its big brother, the Mini Modular provides the same flexibility of use, with the option of liquid, spray and foam products. This mini dispenser is ideal for hotel, domestic and small café/restaurant/office use.

The 400ml, polypropylene reservoir offers ample capacity whilst maintaining excellent chemical compatibility. The cover will lock automatically when closed and has the option of a hidden button, or the supplied key, for opening.

The Mini Modular dispenser's translucent window and graphics area, for your logo, offer you the ability to customise the dispenser with your washroom, kitchen, commercial environment or modular suite.



refillable reservoir



foam pump



spray pump



<b>suitability</b>	flowable liquid soaps, gels and creams foam and spray - liquids with a viscosity of between 1 - 20cps
<b>capacity</b>	400ml
<b>pump</b>	soap/spray/foam - acetal pump with viton seals soap - 2ml shot size (1ml available on request) spray - 0.5ml shot size (0.25ml available on request) foam - 20ml foam shot (0.6ml liquid)
<b>materials</b>	ABS cover and window, glass filled polypropylene backplate polypropylene refillable reservoir/lid
<b>colour</b>	cover - white (chrome and other solid or translucent colours on request) backplate - white or grey window - translucent blue, red, green, yellow, orange and grey
<b>options</b>	hidden lock button
<b>standard pack</b>	one dispenser per carton, including - fixing screws, wall plugs, adhesive pad, key, instructions and keyless push button
<b>dimensions (mm)</b>	H190 x W90 x D98 logo (max) - H55 x W55
<b>weight (approx.)</b>	0.3kg
<b>order reference</b>	refillable liquid, spray, foam - MMSDL MMSDS MMSDF

**washroom ranges**

# Modular industrial soap



This 2 litre version of our Modular soap dispenser has been designed for industrial use. Its large capacity can dispense a wide range of hygiene products from viscous liquid soaps to thick gels and barrier creams through a unique new pump. The dispenser is available with a refillable reservoir or a disposable cartridge, with the reservoir having a further option of a follower plate to ensure complete evacuation of thick products. The cover can be customised with your company logo.

<b>suitability</b>	standard - flowable liquid soaps, gels, barrier creams, beaded products
<b>capacity</b>	2000ml cartridge or reservoir
<b>pump</b>	standard - acetal pump with Viton seals (3ml shot) optional use of MSD liquid, foam and spray pumps
<b>materials</b>	ABS cover and window, glass filled polypropylene backplate polypropylene refillable reservoir/lid polypropylene follower plate polyethylene collapsing cartridge
<b>colour</b>	cover - white backplate - white or grey window - translucent blue, red, green, yellow, orange and grey
<b>options</b>	disposable cartridge follower plate
<b>standard pack</b>	one dispenser per carton, including - Keyless push button, fixing screws, wall plugs, key and instructions
<b>dimensions (mm)</b>	H310 x W140 x D145 logo (max) - H100 x W100
<b>weight (approx.)</b>	0.85kg
<b>order reference</b>	MSD Industrial (standard pump) or MSD Industrial (pumice pump)



Modular soap dispensers now available with a wide range of capacities

The dispenser has the ability to house pumps from the standard Modular soap dispenser, allowing you to dispense liquid, spray or foam soap. This makes it ideal for areas with high traffic flow by reducing the frequency of refilling.

The interchangeable pump has the ability to be locked into place to prevent tampering and the dispenser is provided with a two-year guarantee against defects in materials and workmanship.



**washroom ranges**

# Modular wet wipe


**A 'World First' in wet wipe dispensing**

Our wall-mounted wet wipe unit is a breakthrough in hygiene and convenience. With the BrightWipe dispenser and wet wipes combo, customers can enjoy continuously fresh sanitising towels from a hygienic container that stays put. Users simply pluck a fresh wipe from the wall-mounted dispenser and sanitise in seconds.

**Brand new BrightWipe system**

BrightWipe dispensers feature a unique 'pop and grab' lid, allowing quick and easy access to hygiene products. Combined with our purpose-designed wet wipe pouches, the BrightWipe system delivers a patented combination never before seen on the global market.

**Who Benefits from a BrightWipe Dispenser?**

A BrightWipe dispenser helps any hygiene-conscious business – from mobile catering to manufacturing. So many industries need ready-to-use sterile wet wipes, which the BrightWipe system delivers in a single click.



<b>suitability</b>	surface sanitising, hand sanitising, hand cleaning
<b>capacity</b>	Brightwipe pack, (surface and hand wipes x 200) (industrial wipes x100)
<b>materials</b>	ABS cover, backplate and window mineral filled polypropylene cover insert and lid
<b>colour</b>	cover - white backplate - white window - translucent blue, red, green, yellow, orange and grey
<b>options</b>	alternative profile wipe apertures
<b>standard pack</b>	one dispenser per carton, including - fixing screws, wall plugs, key and instructions
<b>dimensions (mm)</b>	H255 x W155 x D150 logo (max) - H30 x W75
<b>weight (approx.)</b>	0.65kg
<b>order reference</b>	modular wet wipe



Unique spring-loaded lid allows easy 'pop and grab' mechanism. Customers grab towels easily, yet unit is quickly resealed to retain product effectiveness.

Our patented dispensing nozzle ensures fresh wipes are released one at a time, offering greater usability and no more wasted towels.

Patented neck design ensures perfect fit with our exclusive pouch wet wipes, guaranteeing a total moisture seal.

Units are designed with a 'recovery gap' for easy customer retrieval of mis-dispensed towels – an extra user friendly touch typical of Brightwell products

washroom ranges

**BRIGHT** Wipes®



*A wet wipe is only useful if it is wet, or technically speaking, 'retains a consistent level of chemical', right ?*

From the moment you remove the foil from a tub , or split the perforation on a packet, the chemical additive will slowly start to evaporate.

The Modular wet wipe dispenser eradicates this problem by utilising a patented combination of wipes in pouches, click lock loading mechanism, innovative dispensing outlet and spring loaded lid. This limits the exposure of the wipes to atmosphere, preventing them from drying out prematurely.

**How does it remain sealed ?**

The spring loaded lid closes automatically, maintaining a seal which prevents the wipes losing moisture. This preserves a consistent level of chemical in every wipe.

The intelligent cleat mechanism, makes certain wipes are dispensed individually, helping control usage and cost. The cleat can be adapted to suit different textures of wipe. (subject to quantity)

The patented arrangement of the pouch neck and lid create a seal, protecting the wipes from atmosphere.

If the wipes mis-feed and get stuck in the pouch, a small gap at the back of the cleat allows you to easily recover the wipe.

**Can I have a custom wet wipe system with my own logo ?**

Just like all the other dispensers in the modular washroom range the wet wipe dispenser can be printed with your logo or simple instructions. We can manufacture bespoke wipes with customised labels subject to quantity. The pouch neck can be adapted to create a secure system where only your pouches can be fitted, preventing competitors using your dispenser to house their wipes. This is also subject to quantity.

<b>Surface wipes</b>	food/catering/medical/hygiene Anti-bacterial surface sanitising wipes (blue) tested to BS EN 1276 single wipe dimensions 200 x 220 200 wipes per pack 10 packets per box/weight 7.8kg/ order reference - Surface BrightWipe
----------------------	---

<b>Hand wipes</b>	food/catering/medical/hygiene hand sanitising wipes (blue) tested to pr EN 12054: 11995 single wipe dimensions 200 x 220 200 wipes per pack 10 packets per box/weight 7.8kg/ order reference - Hand BrightWipe
-------------------	--

<b>Industrial wipes</b>	general industry Industrial removes oil, grease, grime, wet paint single wipe dimensions 200 x 250 100 wipes per pack 10 packets per box/weight 7.8kg/ order reference - Industrial BrightWipe
-------------------------	--



washroom ranges

**BRIGHT** *Wipes*

**What's the deal with Brightwipes ?**

Brightwell has developed 3 types of wipe called Brightwipes. Supplied in a sealed pouch, they are securely fitted inside the dispenser using a unique, polarised 'click-lock' mechanism.

The pouch is more economical and environmentally friendly than traditional tub methods. As well as reducing waste, it will also have a significant impact on storage and distribution costs.

**kitchens**

**effective against**

- E-coli
- Hepatitis B and C
- MRSA
- Staphylococcus
- Listeria
- Pseudomonas
- Salmonella
- Herpes
- HIV

**Tested by an independant company**

**washrooms**



**housekeeping**

**Cleaning and sanitising surfaces**

Customers simply 'pop and grab' a fresh, sterile wipe from the hygienically sealed container, wipe any surface, then dispose of the towel. Germs are removed, not left lurking in a washcloth or sponge. What's more, the space-saving pouch and dispenser fit in the smallest areas.

The surface wipes comply to BS EN 1276 which means that the chemical disinfectant and antiseptics are safe to use in food, industrial, domestic and institutional areas.

**restaurants**

**laboratories**

The hand wipes have been tested to pr EN 12054: 1995. This is a European standard for evaluating the bactericidal efficacy of surgical hand disinfecting products.

**Certificates available on request**

**food retailers**



**hospitals**

**Clean, dry hands in an instant**

No splash, no mess – just fresh wipes with the perfect impregnation of cleaning chemical for 'no water' hand washing.

Unlike tub dispensers, wall-mounted BrightWipes stay permanently sealed, ensuring every towel has the perfect amount of chemical for hand sanitation.

These wipes are approved under EU cosmetics regulations.

**health clinics**

**garages**

**effective against**

- Oil
- Grease
- Grime
- Wet paint
- Silicones
- Lubricants
- Sealants
- General dirt

**Tested by an independant company**

**workshops**



**work vehicles**

**Easy removal of industrial dirt**

Our purpose-designed industrial wipes remove grease, grime, dirt and wet paint from hands, surfaces – even work tools. The industrial workplace is a great place to promote your brand on a BrightWipe dispenser.

The wipes are also approved under EU cosmetics regulations.

**factories**

washroom ranges

# Modular air freshener



The new Modular air-fresh system brings a breath of ozone friendly fresh air to the Modular range. Despite its attractive looks, it's a highly efficient and cost effective way to control unpleasant odours and provide inspirational/relaxing fragrances. The unit also incorporates a coloured insert and graphics area that can be customised with your company logo.

With the system you can:

- programme it in real time, select the number of refills per year, helping fix costs, enjoy automatic system reset on refill replacement, avoiding the possibility of human error.
- adjust the intensity of the spray for different location conditions, select the time start and number of operational days and choose from a range of colours to match the rest of your modular range.
- 'single button push' last programme option.
- internal LCD display for easy programming.
- the Modular air freshener has a locking case and is top hinged for easy servicing.



Programming the dispenser is easy. Once the cover is open, use the four buttons and LCD screen to set up a programme that is suitable for the surrounding environment.

Once programmed the internal LCD screen displays battery life, aerosol quantity and count down timer to the next spray.

washroom ranges



arctic



chic



jade



citrus



orchid



blossom

**Not just fresh but clean**

Brightfresh fragrances contain Airomanol odour counteractant to neutralise malodours. This ensures bad smells are not just masked but neutralised

**Cost control**

Every aerosol has a 3000 metered dose that works in conjunction with the programming of the dispenser. This allows you to plan your costs for a whole year.

**Wide choice of fragrances**

- arctic** - a refreshing reviving scent
- chic** - a mysterious spicy tang
- jade** - fresh, grassy notes
- citrus** - warm, zesty overtones work well in a washroom environment
- orchid** - all the ambience of the east
- blossom** - a light and silky scent

**Features**

- 3000 metered sprays per refill
- Effective in room sizes up to 6000ft<sup>3</sup> / 200m<sup>3</sup>
- Packed x 12 refills per case
- Two piece professional actuator ensures optimum fragrance dispersal
- Standards: 75/324/EEC 94/1/EC 99/45/EC 2001/60/EC

**Creating the right atmosphere**

These systems are not just designed to cover up bad odours in the washroom. The variation in fragrance allows these units to be placed in areas which enhance the surrounding atmosphere, for example:

- Receptions, lobbies, walkways or corridors
- Offices, meeting rooms
- Locker/changing rooms

- receptions      lobbies
- walkways      corridors
- offices      meeting rooms
- locker/changing rooms

<b>suitability</b>	all Brightfresh fragrance refills
<b>capacity</b>	3000 metered sprays per refill, effective in room sizes up to 200m <sup>3</sup>
<b>battery</b>	2 x D cell, up to 3 years operation
<b>materials</b>	ABS cover, backplate and window
<b>colour</b>	cover and backplate - white window - translucent blue, red, green, yellow, orange and grey
<b>standard pack</b>	one dispenser per carton, including - fixing screws, wall plugs and key
<b>dimensions (mm)</b>	H240 x W100 x D80 logo (max) - H30 x W45
<b>weight (approx.)</b>	0.4kg (excluding batteries and fragrance refill)
<b>order reference</b>	Modular air freshener

washroom ranges

# Modular multiflat toilet tissue



This dispenser is suitable for multiflat or bulkpack toilet tissue. Designed for commercial or light industrial applications, the dispenser is made from smooth injection moulded plastic and features a self-locking cover with a universal key. The dispenser also incorporates a window, allowing easy assessment of refill requirements, and large graphics plaque that can be customised with your company logo.

<b>suitability</b>	multiflat or flat pack toilet tissue up to 125mm in width
<b>capacity</b>	230mm stack
<b>materials</b>	ABS cover, backplate and window
<b>colour</b>	cover and backplate - white, alternative colours subject to quantity window - translucent blue, red, green, yellow, orange and grey
<b>standard pack</b>	one dispenser per carton, including - fixing screws, wall plugs and key
<b>dimensions (mm)</b>	H275 x W150 x D130 logo (max) - H30 x W70
<b>weight (approx.)</b>	0.85kg
<b>order reference</b>	Modular multiflat



washroom ranges

# Modular jumbo

This dispenser, available in three sizes, is made from smooth, injection moulded plastic and has a self-locking cover, accessed using a universal Modular key (supplied). It is suitable for a wide range of commercial toilet rolls, compatible with both perforated an un-perforated papers and comes with a reversible spigot to accommodate varying roll core diameters. The dispenser also incorporates a window, allowing easy assessment of refill requirements, and large graphics plaque that can be customised with your company logo.



<b>suitability</b>	perforated or un-perforated jumbo rolls with a maximum width of 110mm and a core size between 45mm and 65mm
<b>capacity</b>	max diameter 200mm (small) 260mm (medium) 300mm (large)
<b>materials</b>	ABS cover, backplate and window
<b>colour</b>	cover and backplate - white, alternative colours subject to quantity window - translucent blue, red, green, yellow, orange and grey
<b>standard pack</b>	one dispenser per carton, including - fixing screws, wall plugs and key
<b>dimensions (mm)</b>	small - H275 x W220 x D145 medium - H325 x W280 x D145 large - H375 x W340 x D145 logo (max) - H30 x W70
<b>weight (approx.)</b>	small - 0.65kg medium - 0.8kg large - 1.0kg
<b>order reference</b>	Modular Jumbo - small/medium/large



**washroom ranges**

# Modular hand towel

Available in two sizes, the modular hand towel dispenser is an indispensable addition to the Modular range. Combining robust manufacture from tough injection moulded plastic with a unique outlet aperture means that this dispenser is as strong as it is versatile, accommodating your choice of interleaved or centrefold hand towels. The dispenser also incorporates a window, allowing easy assessment of refill requirements, and large graphics plaque that can be customised with your company logo.



<b>suitability</b>	interleaved or centrefold towels up to 255mm wide
<b>capacity</b>	maximum stack height 200mm (small) 360mm (large)
<b>materials</b>	ABS cover, backplate and window
<b>colour</b>	cover and backplate - white, alternative colours subject to quantity window - translucent blue, red, green, yellow, orange and grey
<b>options</b>	Modular hand towel spacer
<b>standard pack</b>	one dispenser per carton, including - fixing screws, wall plugs and key
<b>dimensions (mm)</b>	small - H265 x W290 x D145 large - H425 x W290 x D145 logo (max) - H30 x W70
<b>weight (approx.)</b>	small - 0.75kg large - 1kg
<b>order reference</b>	Modular hand towel small/large



For hand towel that is below 100mm in folded width, we offer a special spacer that attaches to the backplate, near the outlet, to ensure the efficient dispensing of narrower paper.

washroom ranges

# Modular hand dryer



This compact, automatic hand dryer offers the power and performance of a large machine with the economy of a smaller, lower powered model. The hand dryer is listed as having a class II enclosure, which means it is double insulated and suitable for installation in a washroom or similar environment. It is fully CE approved and manufactured under ISO9001: 2000. A qualified electrician should carry out installations.

The hand dryer also incorporates a stylish window and large graphics plaque that can be customised with your company logo.

<b>power</b>	220-240V AC, 50/60Hz, 4.8A, 1100W
<b>operation</b>	automatic start when hands are placed below outlet, automatic stop 2 seconds after hands are removed, airflow - 96m <sup>3</sup> per hour, thermal cut-out 95°C
<b>materials</b>	ABS cover and window, polypropylene backplate
<b>colour</b>	cover - white window - translucent blue, red, green, yellow, orange and grey
<b>standard pack</b>	one dispenser per carton, including - fixing screws, wall plugs and key
<b>dimensions (mm)</b>	H260 x W145 x D140 logo (max) - H30 x W70
<b>weight (approx.)</b>	1.2kg
<b>order reference</b>	Modular hand dryer

Busy hotels may consider installing this hand dryer in washrooms along with the Modular hand towel dispenser. Using the two in tandem can be beneficial. In addition, should the hand towels run out, then the hand dryer is available as a back-up.



### Recommended number of dryers per washroom.

In toilet areas with a normal frequency of use and only one wash-basin: 1 dryer.

In toilet areas with a normal frequency of use and more than one wash-basin: 1 dryer for every 2 wash-basins

In toilet areas with high traffic and more than one wash-basin: 2 dryers for every 3 wash-basins. 1 row of 4 wash basins: 3 dryers; 1 row of 6 wash basins: 4 dryers; 1 row of 8 wash basins: 5 dryers.

### Ideal Location:

Between the wash-basin and exit. It is **not** recommended to install a dryer between wash-basins, next to urinals, lavatories and showers. If installing automatic dryers over marble surface or ledge, the minimum distance from the dryer to the ledge must be 400 mm. It is recommended that hand dryers be distributed throughout the washroom area to avoid overcrowding.



120 cm (47")   115 cm (45")   95 cm (37")   100 cm (40")

Recommended height for installations

washroom ranges

# chrome plated soap dispensers

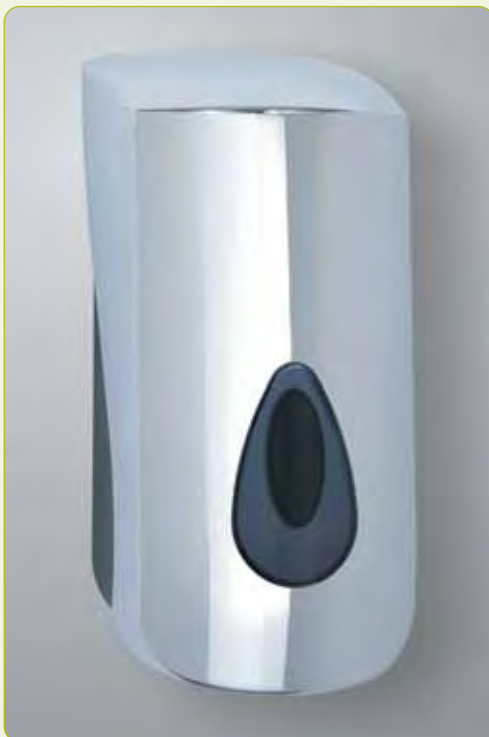
Our soap dispensers from the Modular range are also available with a chrome-plated finish. Created using a 14-layer process, the chrome finish is ideal for high quality washrooms, hotels, restaurants and top accounts.



Mini Modular soap dispenser

<b>dimensions (mm)</b>	Modular soap - H250 x W115 x D115 logo (max) - H75 x W75
	Mini Modular soap - H190 x W90 x D98 logo (max) - H55 x W55
	Modular soap 'touch-free' - H250 x W115 x D115 logo (max) - H75 x W75
<b>weight (approx.)</b>	Modular soap - 0.5kg
	Mini Modular soap - 0.3kg
	Modular soap 'touch-free' - 0.6kg
<b>order reference</b>	Modular soap chrome
	Modular soap chrome 'touch-free'
	Mini Modular soap chrome

Note: see individual product page for full specification



Modular soap dispenser



Modular soap dispenser 'touch-free'